



01: Private Villa Kipila

Facts

Sleeps: 8 Adults + 6 Children
Bedrooms: 5
Price: On application

Services

Villa Manager
Butler
Housekeepers
Private Picnics
Laundry
Turn-down
4x4 Vehicle + Driver
Activity Reservations

Kipila (meaning 'plover' in Kimwani) is a 5 bedroom private villa, sleeping up to 12 people. Set within 3 acres of grounds and with over 125 metres of pristine beachfront it offers the ultimate in exclusivity. There are 4 en-suite double/ twin rooms, 1 children's room and a nannie's room.

The rooms are all sea-facing, with private decking and intimate pathways leading to the beach. The communal area consists of a spacious lounge and dining room with ample hardwood decking and a swimming pool. Above the dining room is a children's games room with table-tennis, TV, books and board games. A tower, inspired by the Portuguese lighthouse on Vamizi, offers spectacular views across the ocean; the perfect setting for a sun-downer.

Kipila has a pitched 'Balinese-style' timber shingle roof with high ceilings in all of the rooms. The bathrooms epitomise outdoor living with elegant gardens set within them. Kipila is staffed with a private chef and hospitality team and has its own 4x4 car with driver. An array of sailing boats and kayaks are available for guests along with fishing, diving, nature walks, community visits and picnics. fishing, diving, nature walks, community visits and picnics.

02: General information

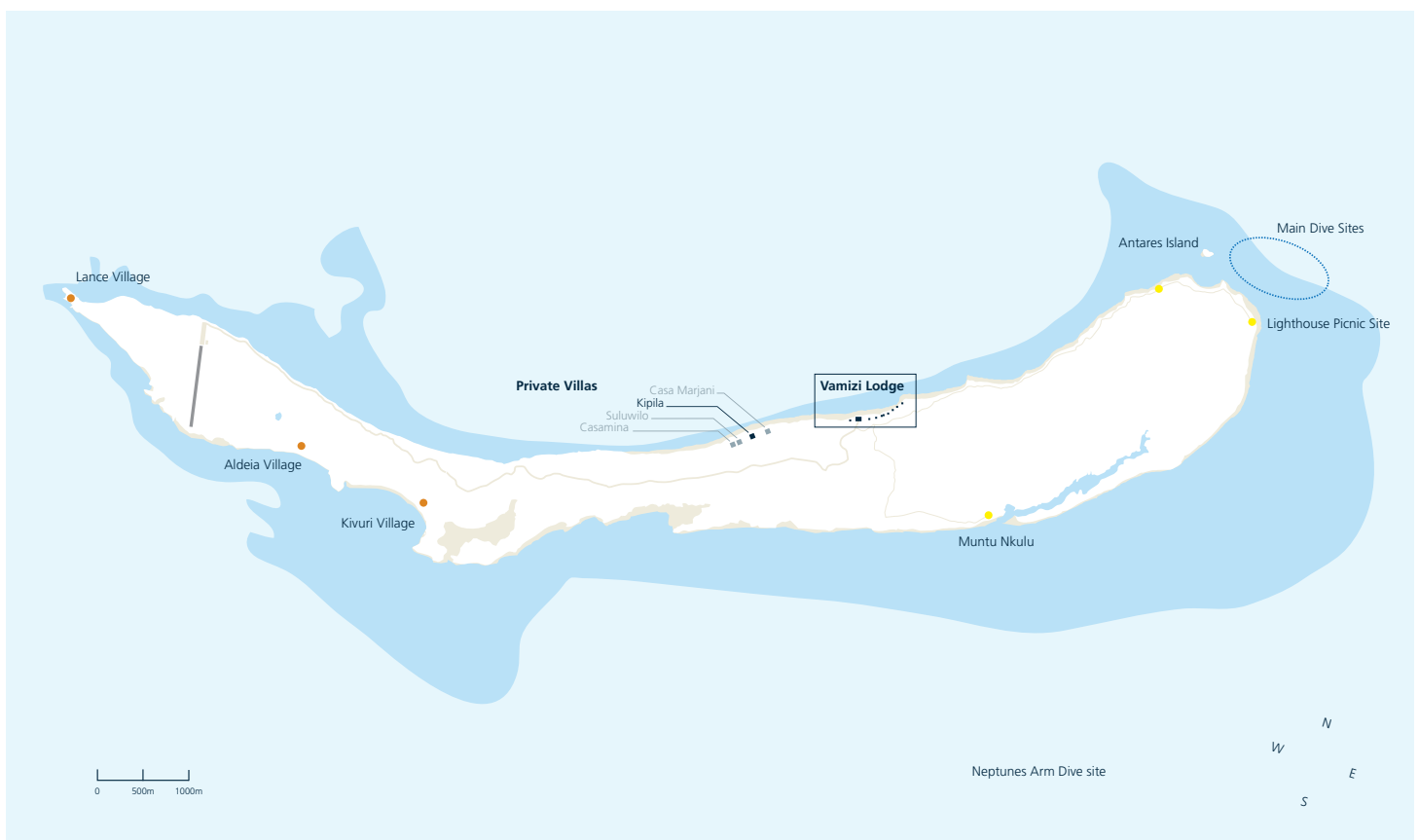
Bedrooms

Master BR – Double Bed. En suite Bathroom.
BR2 - Double/Twin. En Suite Bathroom
BR3 - Double/Twin. En Suite Bathroom
BR4 - Double/Twin. En Suite Bathroom
BR5 Children's Room – 2 x bunk beds (4 children)
BR5 (Nannie Section) - 2 x twin beds
BR5 Children and Nannie Share a Bathroom

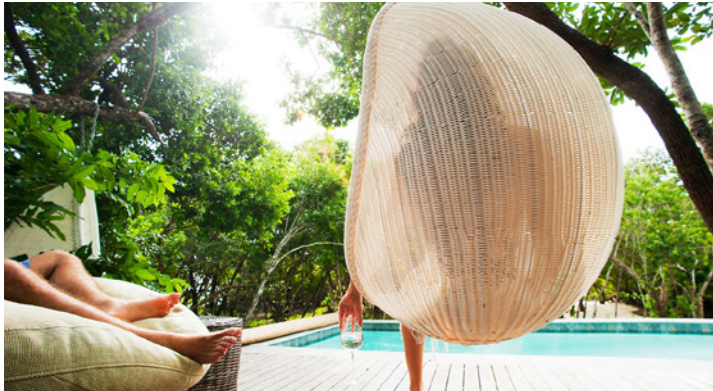
Facilities

Wi-Fi
Safe Deposit Boxes
Tea and Coffee
Wine Fridge
Hairdryers
Swimming Pool
Sun Loungers
Study
Hanging Chairs
TV with DSTV Satellite
Table Tennis
Board Games

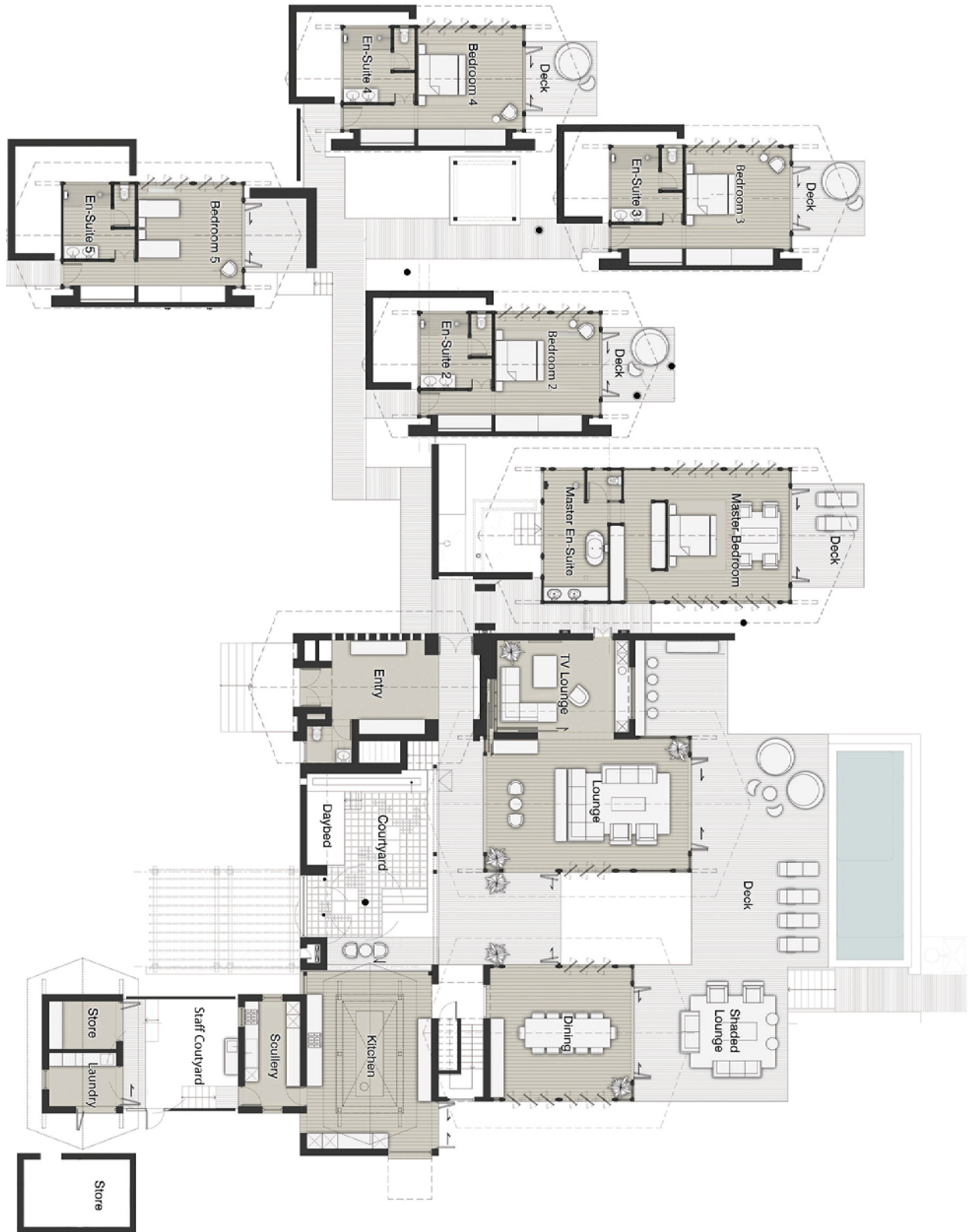
Location



03: Image Gallery



04: Villa Plan ground floor



05: Villa Plan first floor

